



The Vintage Sports Car Club

Pietermaritzburg, South Africa

"Forward into the Past"

POSTAL ADDRESS

P.O. Box 11709
Dorpspruit
KwaZulu-Natal
3206

South Africa

CLUB ADDRESS

120 Oribi Road
Bisley
Pietermaritzburg
3201

South Africa

Cars in the Park 2017 Traffic Flow

Traffic congestion and delays have caused some frustration at the last 2 events.

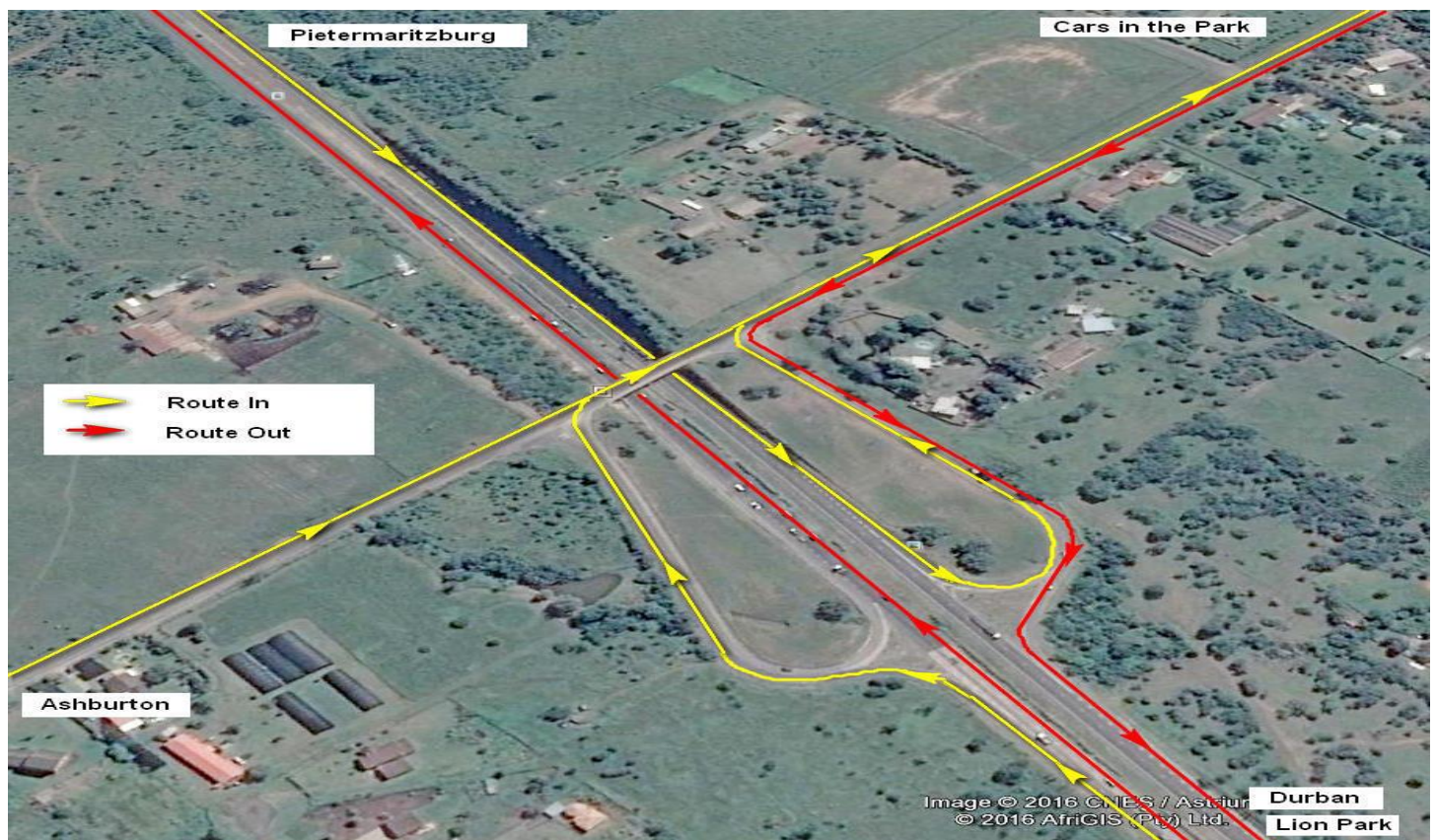
After careful evaluation, planning and discussion with the Road Traffic Department we have come up with a solution that will hugely improve the traffic flow.

The main problem was caused at the N3 Ashburton off ramp between 10.00am and 1.00pm, when the incoming and exiting traffic flow becomes the same. This created traffic backup right back to the event site.

On the event day, from 9.00am to 3.00pm, any exiting traffic will be diverted onto the Durban off ramp, which will avoid any lane crossing at the Ashburton bridge. Those wanting to travel to Pietermaritzburg will make a U turn at the Lion Park off-ramp +/- 3km away.

The parking facilities at the event have also been improved and will reduce congestion and delays.

Leaving the show, like any big event, there will be some delays, but they will be reduced substantially.



Should any further information be required please do not hesitate to contact us.

Carl Habermann
082 447 3355

Venue GPS co-ordinates: 29°38'43.23"S 30°28'8.62"E
Clubhouse GPS co-ordinates: 29°38'12.55"S 30°23'40.55"E

Web Page: <http://www.vsccl.co.za/> and <http://www.carsinthepark.net>
E-mail: admin@carsinthepark.net or ctip@satweb.co.za

[Facebook](#)

[Twitter](#)

[Instagram](#)